

Dual Steering Stabilizer

1/2, 3/4, & 1 Ton Chevy/GMC Pickup | 1973-1987

Part # 55374

Rev. 122220



491 W. Garfield Ave., Coldwater, MI 49036 • Phone: 517-279-2135

Web/live chat: www.bds-suspension.com • E-mail: tech-bds@ridefox.com

SAFETY WARNING

BDS Suspension Co. recommends this system be installed by a professional technician. In addition to these instructions, professional knowledge of disassembly/ reassembly procedures and post installation checks must be known.

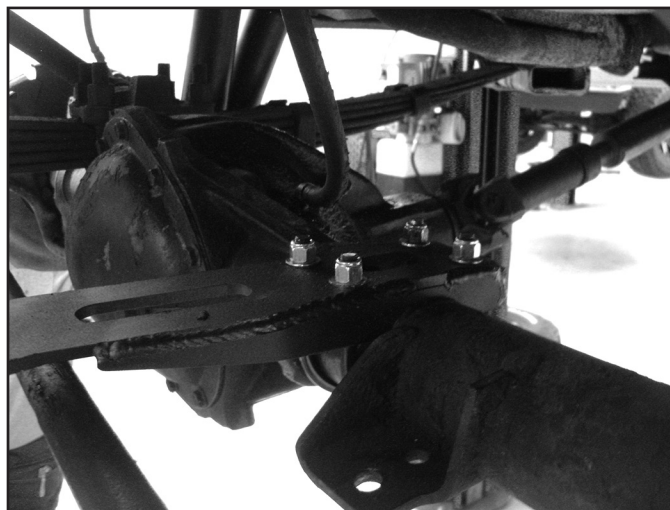
55374 Box Kit		
Part #	Qty	Description
01559	1	Center Stabilizer Bracket
01530	1	Tie Rod Stabilizer Mount - DS
01531	1	Tie Rod Stabilizer Mount - PS
01571	1	Badge Mounting Plate
01572	1	BDS Badge
887	1	Rivet Bolt Pack
38300400RB	2	3/8" x 3" x 4" U-bolt
561140200RB	4	5/16" x 1-1/4" x 2" U-bolt

55374 Box Kit (cont.)		
Part #	Qty	Description
306	1	Bolt Pack
	4	3/8" SAE washer
	8	1/4" USS washer
	8	5/16"-18 nylock nut
	4	3/8"-24 nylock nut
337	1	Bolt Pack
	2	1/2"-13 x 2-3/4" bolt
	2	1/2"-13 Prevailing torque nut
	4	1/2" SAE washer

INSTALLATION INSTRUCTIONS

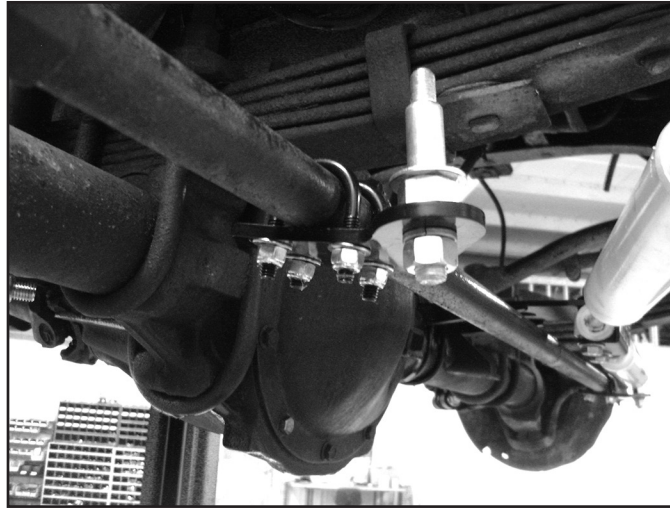
1. Raise vehicle and support the frame with jack stands. Turn the wheels so they are straight ahead.
2. Remove the OE steering stabilizer from the OE axle mount Remove the mounting bracket from the tie rod.
3. Loosely mount the center bracket to the top of the axle tube so it seats against the differential housing and is level using the provided 3/8" u-bolts, nuts, and washers (Fig. 1).

FIGURE 1



4. The outer brackets mount to the bottom of the tie rod with the bend up and with the mounting tab facing towards the outside of the vehicle (Fig. 2).

FIGURE 2



5. Loosely fasten the outer brackets to the tie rod with the 5/16" u-bolts, nuts, and washers. Position the driver side bracket as far out as possible up against the hex on the tie rod. Final positioning will be done once the cylinders are installed.
6. Install the shock studs on to the outer brackets with the stud facing up using the 1/2" nut and lock washer (Fig. 2). Torque studs to 50 ft-lbs.
7. Install the hourglass bushings into the cylinders. Install the 1/2" ID sleeves into the rod end of each stabilizer.
8. Using the provided 1/2" hardware, loosely install the badge mount plate and stabilizer cylinders onto the center bracket. The nameplate will mount above the center mount with the stabilizers mounting below (Fig. 3).

FIGURE 3



9. The badge can now be riveted on to the front plate using the provided 1/8" rivets. Any residue on the badge can be cleaned up using alcohol or brake cleaner before install. With the badge not installed it can be painted to what ever color you desire, or left raw as a stainless steel badge.
10. Slide the 5/8" ID washer followed the body of each stabilizer onto the shock studs on the outer brackets. Fasten the stabilizer to the studs using the 7/16" flat washer, lock washer, and nut (Fig. 4)

FIGURE 4



11. With the tires facing forward, measure the exposed rod length of the driver side stabilizer and move the passenger side outer tie rod bracket to match. Level and position the stabilizers to the desired position. Torque all of the hardware using the following specifications:
 - 1/2" hardware: 50 ft-lbs
 - 7/16" shock studs: 40 ft-lbs
 - 3/8 hardware: 30 ft-lbs
 - 5/16" hardware: 20 ft-lbs

FIGURE 5



12. Perform a steering sweep to make sure there is no interference and the cylinders have full stroke to the steering stops.
13. Periodically inspect assembly for tightness.



WE WANT TO SEE YOUR RIDE!

Grab photos of your BDS-equipped truck in action and send them in for a chance to be featured. Send it in to our Bad Ass Rides customer gallery at bds-suspension.com/bar and post them on the BDS Fan Page on Facebook at facebook.com/BDSSuspensions. Don't forget about your BDS swag! BDS offers t-shirts, hoodies, decals and more available on the BDS website or through your local BDS distributor.

TIME TO HAVE SOME FUN

Thank you for choosing BDS Suspension.

For questions, technical support and warranty issues relating to this BDS Suspension product, please contact your distributor/installer before contacting BDS Suspension directly.