

INSTALLATION GUIDE



Part#: 013001



HARDCORE LIMITED LIFETIME WARRANTY

4" & 6" Suspension System

Ford F100/F150 & Bronco 4WD | 1980-1996

Rev. 071023

491 W. Garfield Ave., Coldwater, MI 49036 • Phone: 517-279-2135

Web: www.bds-suspension.com • E-mail: tech-bds@ridefox.com

Read And Understand All Instructions And Warnings Prior To Installation Of System And Operation Of Vehicle.



THANK YOU

Your truck is about to be fitted with the best suspension system on the market today. That means you will be driving the baddest looking truck in the neighborhood, and you'll have the warranty to ensure that it stays that way for years to come.

Thank you for choosing BDS Suspension!

BEFORE YOU START

BDS Suspension Co. recommends this system be installed by a professional technician. In addition to these instructions, professional knowledge of disassembly/ reassembly procedures and post installation checks must be known.

FOR YOUR SAFETY

Certain BDS Suspension products are intended to improve off-road performance. Modifying your vehicle for off-road use may result in the vehicle handling differently than a factory equipped vehicle. Extreme care must be used to prevent loss of control or vehicle rollover. Failure to drive your modified vehicle safely may result in serious injury or death. BDS Suspension Co. does not recommend the combined use of suspension lifts, body lifts, or other lifting devices. You should never operate your modified vehicle under the influence of alcohol or drugs. Always drive your modified vehicle at reduced speeds to ensure your ability to control your vehicle under all driving conditions. Always wear your seat belt.

BEFORE INSTALLATION

- Special literature required: OE Service Manual for model/year of vehicle. Refer to manual for proper disassembly/reassembly procedures of OE and related components.
- Adhere to recommendations when replacement fasteners, retainers and keepers are called out in the OE manual.
- Larger rim and tire combinations may increase leverage on suspension, steering, and related components. When selecting combinations larger than OE, consider the additional stress you could be inducing on the OE and related components.
- Post suspension system vehicles may experience drive line vibrations. Angles may require tuning, slider on shaft may require replacement, shafts may need to be lengthened or trued, and U-joints may need to be replaced.
- Secure and properly block vehicle prior to installation of BDS Suspension components. Always wear safety glasses when using power tools.
- If installation is to be performed without a hoist, BDS Suspension Co. recommends rear alterations first.
- Due to payload options and initial ride height variances, the amount of lift is a base figure. Final ride height dimensions may vary in accordance to original vehicle attitude. Always measure the attitude prior to beginning installation.



Visit 560plus.com for more information.

TIRES AND WHEELS

33 x 12.50 w/15 x 8, 3.5" BS (4" Kit)
35 x 12.50 w/15 x 8, 3.5" BS (6" Kit)



BEFORE YOU DRIVE

Check all fasteners for proper torque. Check to ensure for adequate clearance between all rotating, mobile, fixed, and heated members. Verify clearance between exhaust and brake lines, fuel lines, fuel tank, floor boards and wiring harness. Check steering gear for clearance. Test and inspect brake system.

Perform steering sweep to ensure front brake hoses have adequate slack and do not contact any rotating, mobile or heated members. Inspect rear brake hoses at full extension for adequate slack. Failure to perform hose check/ replacement may result in component failure. Longer replacement hoses, if needed can be purchased from a local parts supplier.

Perform head light check and adjustment.

Re-torque all fasteners after 500 miles. Always inspect fasteners and components during routine servicing.

CONTENTS OF YOUR KIT

013001 Box Kit

Part #	Qty	Description
083401R	1	Ford Pitman Arm
01005B	1	Axle Pivot Bracket - PS
01006B	1	Axle Pivot Bracket - DS
01007B	1	Radius Arm Bracket - DS
01008B	1	Radius Arm Bracket - PS
BP013001	1	Bolt Pack
	1	9/16"-12 x 3-1/2" Bolt, Grade 8, Yellow Zinc
	2	9/16" SAE Washer, Yellow Zinc
	1	9/16"-12 Prevailing Torque Nut, Yellow Zinc
	2	1/2"-13 x 1-1/2" Bolt, Grade 8, Yellow Zinc
	4	1/2" USS Washer, Yellow Zinc
	2	1/2"-13 Prevailing Torque Nut, Yellow Zinc
	12	7/16"-14 x 1-1/4" Bolt, Grade 8, Yellow Zinc
	24	3/8" USS Washer, Yellow Zinc
	12	7/16"-14 Prevailing Torque Nut, Yellow Zinc
	2	5/16"-18 x 1-1/4" Bolt, Grade 5, Clear Zinc
	4	1/4" USS Washer, Clear Zinc
	2	5/16"-18 NyLock Nut, Clear Zinc

033601 Box Kit

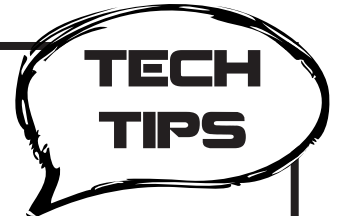
Part #	Qty	Description
033601R	2	6in Lift Coil Springs

033401 Box Kit

Part #	Qty	Description
033401R	2	4in Lift Coil Springs

TROUBLESHOOTING INFORMATION FOR YOUR VEHICLE

1. If your vehicle is equipped with a front anti-sway bar, you will want a 123401 available in the options.
2. Does not fit F150 or Broncos without power steering.
3. Front alignment cams available in the accessories may be required for alignment.
4. #123401 recommended if equipped with a front anti-sway bar. Ford produced 3 different styles of sway bar systems between 1980 and 1996. In extremely rare cases, modification may be required.
5. Extended lines required for all 4-6" lifts.



INSTALLATION INSTRUCTIONS

INSTALLATION INSTRUCTIONS

FRONT SYSTEM INSTALLATION

1. Park vehicle on clean, flat, and level surface. Block the rear wheels for safety.
2. Lift front of vehicle with hydraulic jack. Secure frame rails with jack stands. If installing optional long radius arms, make sure there will be clearance for brackets.
3. Remove wheels
4. Disconnect the anti-sway bar (if equipped) from the frame, retain hardware. (Fig 1)
5. Disconnect steering linkage from pitman arm, retain nut. (Fig 2)

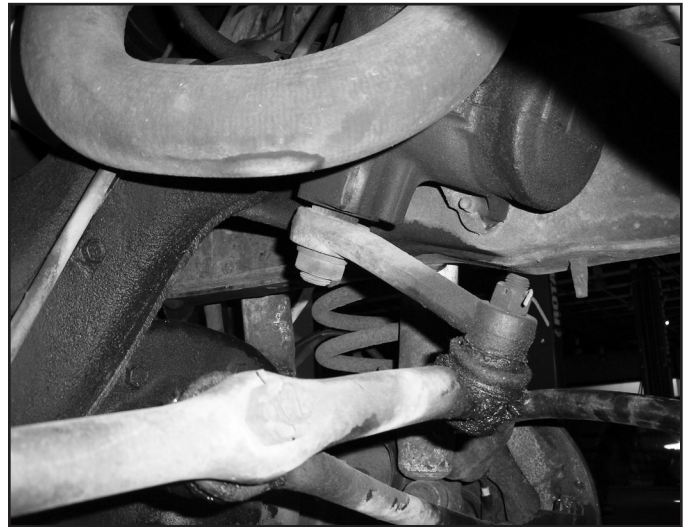
SPECIAL TOOLS

Air Chisel / Drill / Torches (for removing OEM rivets from the frame)
SAE and Metric Wrenches
Jack Stands
OEM Service Manual

FIGURE 1



FIGURE 2



6. Remove pitman arm from sector shaft with appropriate puller.
7. Install new pitman arm with OE hardware. Tighten nut to factory specifications.
8. Remove radius arm nut and bushing, retain bushings and nut. (Fig 3)

FIGURE 3



9. Place a hydraulic jack under the radius arm bracket. Remove OEM rivets and bolts that attach the bracket to frame rail, discard hardware. Lower jack and move to radius arm at axle mount, under the coil. (Fig 4)

10. Support the axle with a hydraulic jack under the coil spring. Remove shocks and lower the axle until there is no load on the coil. The upper shock bushings will not be reused when the kit is installed with BDS replacement shocks. They can be removed with a punch / chisel and hammer.
11. Remove J-clips, retain hardware. Lower the axle and pull the top of the coil from the upper coil bucket. (Fig 5)

FIGURE 4

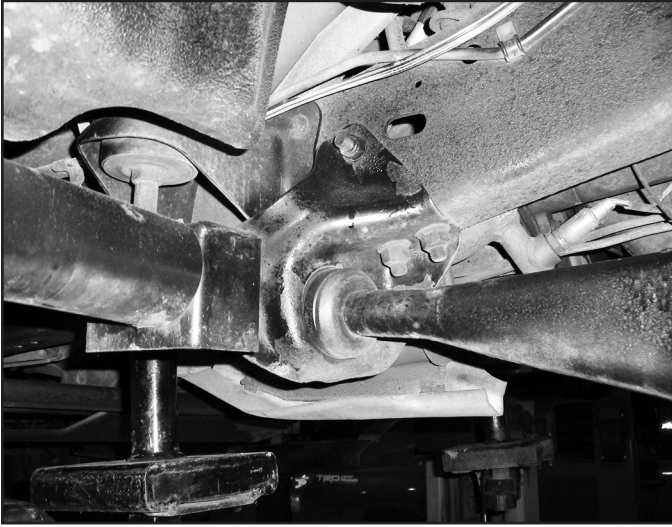


FIGURE 5



12. Remove the nut and captive washer retaining the coil to axle, retain hardware. Remove the coil from vehicle. (Fig 6a/6b)

FIGURE 6A

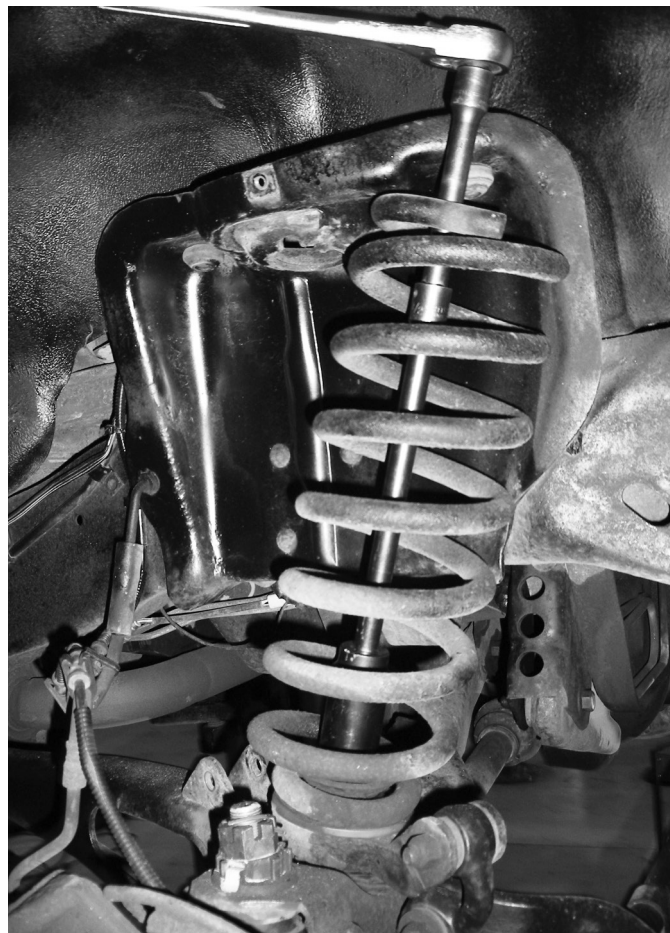


FIGURE 6B



13. Install shocks at this time. Do not tighten any of the hardware. The shocks will limit the droop of the axle during assembly, and will be removed later for installation of the new coil.
14. Remove axle pivot bolt, repeat for opposite side, and retain hardware.
15. Remove bracket from the passenger's side of the vehicle, retain hardware (Fig 7a/7b). Install new bracket with OE hardware, leave hardware loose at this time. Install radius arm into bracket with OE bolt. Snug, but do not tighten at this time. Final torque will be done with the weight of the vehicle on the ground with the suspension at ride height. (Fig 9a/9b)

FIGURE 7A



FIGURE 7B



16. Cut out the template on the back of the instruction sheet. Place template as shown in the figure.

Note: Match the holes to be drilled to the replacement bracket given in the kit. The two holes shown should be vertical, and the outer profile should be horizontal. Drill holes out to 9/16". (Fig 8)

FIGURE 8

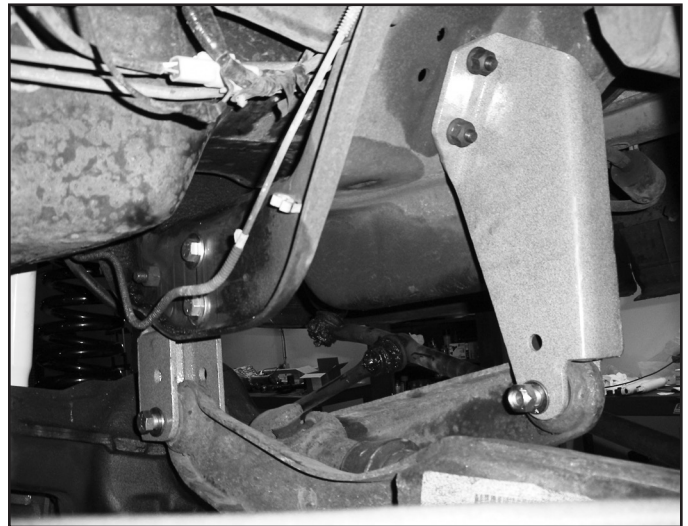


17. Install bracket with a new 9/16" x 3" bolt with nut and washers through the OE mounting hole. Attach bracket to drilled holes with 1/2" x 1-1/2" bolts with nuts and washers. Leave hardware loose at this time.
18. Install axle pivot bracket into location with OE hardware. Reference the figure for which holes to mount the brackets in. The 4" kit will use the top hole, the 6" kit will use the bottom hole (closest to the ground). Snug, but do not tighten at this time. Final torque will be done with the weight of the vehicle on the ground with the suspension at ride height. (Fig 9a / 9b)

FIGURE 9A

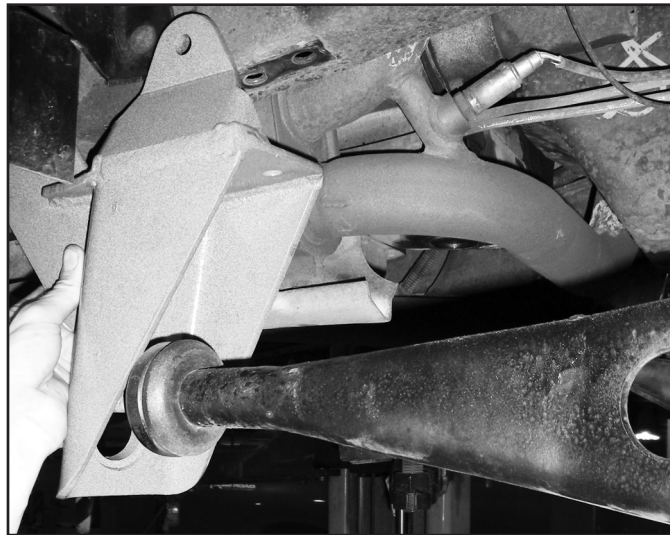


FIGURE 9B



19. Torque axle pivot drop bracket hardware as follows: 9/16" hardware to 110 ft-lbs, 1/2" hardware to 106 ft-lbs.
20. Attach radius arm drop brackets on frame rails to existing holes with 7/16" hardware. Use bracket as a guide and drill remaining mounting holes with 1/2" drill bit. Secure remaining mounting points with supplied 7/16" hardware. Tighten hardware to 50 ft-lbs. (Fig 10)

FIGURE 10



21. Install OE radius arms with OE bushings and hardware at this time, snug but do not tighten at this time.
22. Support the front axle with a hydraulic jack. Disconnect the front shocks that were temporarily installed to allow the axle to droop.
23. Droop the axle far enough to install the coil springs. Take care not to over-extend the brake lines. See coil spring instructions for more details.
24. Reattach shocks with new bushings, new upper nut with jam nut, and OE lower hardware. Repeat for auxiliary shock if applicable.
25. Form the brake line at the caliper (bend towards frame rail) to allow for adequate slack in the line at full droop. Cycle the steering to ensure that there is adequate slack in the line. If there is not enough slack, replacement longer length lines must be installed. If lines are installed the brake system must be bled prior to vehicle operation. (Fig 11)

FIGURE 11



26. If front anti-sway bar is present, then install BDS sway-bar extension kit #123401 (ordered separately) at this time. Install the bracket to the frame using the 3/8" fasteners, do not tighten at this time. Attach the OEM sway bar bracket to the extension bracket and tighten all fasteners to specification.
27. If optional bump stop extension kit #129000 was purchased, Remove nut that attaches bump stops to frame. Install bump stop drop brackets. Attach with 3/8" x 1-1/4" bolt, washers, and nut, the hole in the frame may have to be slightly enlarged to clear the bolt. Tighten to 30 ft-lbs. Attach bump stops to drop brackets. Order kit # 170001 if you want new polyurethane bump stops, not included with this kit. (Fig 12)

FIGURE 12



28. If optional upper ball joint cams were purchased, install them at this time. Reference the OE service manual for proper removal and installation.
29. Reattach steering linkage to pitman arm with OE nut and new cotter pin.
30. Reinstall wheels and torque lug nuts to OE specifications.
31. Install applicable BDS shocks for your vehicle and amount of lift.
32. Install the desired BDS rear lift system at this time.
33. Lower vehicle to ground, bounce the suspension to allow it to settle. Tighten lower axle pivot bolts to 105 ft-lbs. Tighten radius arm bushing nuts until nut bottoms out.
34. Adjust headlights as needed.
35. Align front end to OEM alignment specifications before operating.

REPLACEMENT LEAF SPRING INSTALLATION ONLY

36. Block the front wheels, Jack up the rear of the vehicle and place jack stands along the frame rail to support the vehicle. Remove the rear wheels.
37. With the axle firmly supported by the jack, remove the OEM shocks.
38. Loosen the OEM u-bolts that retain the spring to the axle. Only remove one side at a time.
39. Lower the hydraulic jack supporting the rear axle slightly, to create a gap between the axle and leaf pack. Take note of which way the factory wedge is installed (this will be reused).
40. Remove the OE leaf pack.
41. Install the provided leaf springs with OE hardware.
42. Place the OE wedge between the axle and newly installed leaf pack. Short end towards the front.
43. Lift the axle up with the hydraulic jack and install the provided u-bolts. Snug up the u-bolts. Final torque will happen on the ground.
44. Repeat all procedures for the other side.
45. Lower the vehicle to the ground. Torque u-bolts to factory specs.
46. Be sure to check all fasteners and the alignment after 500 miles operation.

SUPPLIED FASTENERS TORQUE SPECIFICATION

- 1/4" Fasteners (Grade 5) 9 ft lbs
- 3/8" Fasteners (Grade 5) 30 ft lbs
- 7/16" Fasteners (Grade 5) 50 ft lbs
- 1/2" Fasteners (Grade 8) 106 ft lbs
- 9/16" Fasteners (Grade 5) 110 ft lbs
-



WE WANT TO SEE YOUR RIDE!

Grab photos of your BDS-equipped truck in action and send them in for a chance to be featured. Send it in to our Bad Ass Rides customer gallery at bds-suspension.com/bar and post them on the BDS Fan Page on Facebook at facebook.com/BDSSuspensions. Don't forget about your BDS swag! BDS offers t-shirts, hoodies, decals and more available on the BDS website or through your local BDS distributor.

TIME TO HAVE SOME FUN

Thank you for choosing BDS Suspension.

For questions, technical support and warranty issues relating to this BDS Suspension product, please contact your distributor/installer before contacting BDS Suspension directly.

