

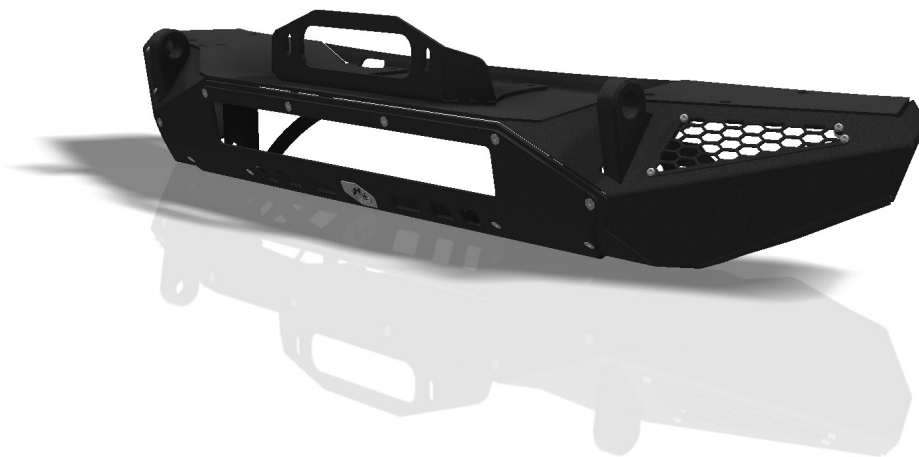
CRAWLTEK R E V O L U T I O N

491 W. GARFIELD AVE., COLDWATER, MI 49036 • 517.278.1039
CRAWLTEKREVOLUTION.COM • E-MAIL: SALES-CRAWLTEK@RIDEFOX.COM

INSTALLATION INSTRUCTIONS

BLAZE FRONT BUMPER **JL12101 - 20 INCH LIGHTBAR**

FOR USE WITH ALL
JL AND JLU MODELS FROM 2018-CURRENT



CrawlTek YouTube

PLEASE READ THROUGH INSTRUCTIONS BEFORE INSTALLING

2023-12-12

WHAT'S IN THE BOX?

PLEASE VERIFY KIT CONTENTS BEFORE BEGINNING INSTALLATION

PART #	Qty	DESCRIPTION
06001	1	JL BLAZE FRONT BUMPER
06002	2	JL BLAZE FRONT BUMPER WING VENT
06003	1	JL BLAZE FRONT BUMPER FAIRLEAD MOUNT
06004	1	JL BLAZE FRONT BUMPER CENTER FACE 20IN LIGHT PLATE
06005	1	JL BLAZE FRONT BUMPER 20IN LIGHT MOUNT - DRV
06006	1	JL BLAZE FRONT BUMPER 20IN LIGHT MOUNT - PASS
06176	1	CRAWLTEK STAINLESS STEEL BADGE
CWLU30010	1	DECAL: CRAWLTEK GEARSHIFT
CWLU30020	1	DECAL: CRAWLTEK EYES
CWLU30030	1	DECAL: CRAWLTEK JAX
C0022	1	BOLT PACK
	8	7/16"-14 X 1" HEX CAP SCREW
	8	7/16" SAE FLAT WASHER
	8	7/16"-14 SERRATED EDGE FLANGE NUT
	8	7/16" PUSHNUT BOLT RETAINER
	8	#10-24 X 5/8" SS BUTTON SOCKET HEAD CAP SCREW
C0023	1	BOLT PACK
	2	1/4"-20 X 5/8" FLAT HEAD SOCKET CAP SCREW(LIGHT BRACKET)
	12	1/4"-20 X 3/4" FLAT HEAD SOCKET CAP SCREW(CENTER FACEPLATE)
	4	1/4"-20 SERRATED EDGE FLANGE NUT
C0041	1	BOLT PACK
	4	18-8 3/32" SS RIVET

TOOLS REQUIRED

SAFETY GLASSES

18MM SOCKET OR WRENCH

10MM SOCKET OR WRENCH

11/16" SOCKET OR WRENCH

5/8" SOCKET OR WRENCH

9/16" WRENCH

7/16" SOCKET

3/16" ALLEN HEAD SOCKET

FLAT HEAD SCREWDRIVER

1/4"-20 STRAIGHT FLUTE TAP



PRE-INSTALLATION NOTES

1. INSTALLING A LARGE BODIED WINCH MAY REQUIRE ADDITIONAL CUTTING TO TOP OF THE FRAMEHORNS.

FACTORY FRONT BUMPER REMOVAL

STEP 1:

REMOVE THE TOP TWO (2) PINS HOLDING THE BUMPER VALENCE BRIDGING THE GAP BETWEEN BUMPER AND BOTTOM OF THE FRONT GRILL ASSEMBLY (**FIG 1**).



FIGURE 1

STEP 2:

REMOVE THE EIGHT (8) PUSH PINS THAT ATTACH THE FRONT LOWER VALENCE TO THE BOTTOM OF THE STOCK FRONT BUMPER. NEXT, REMOVE THE TWO (2) SCREWS THAT CONNECT THE LOWER VALENCE TO THE FRAME CROSSMEMBER (**FIG 2**).

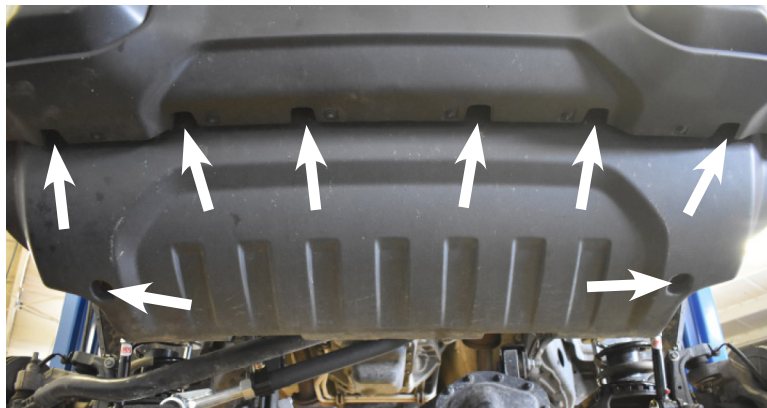


FIGURE 2

STEP 3:

DISCONNECT THE STOCK FOG LIGHT WIRING HARNESS RUNNING ALONG THE PASSENGER SIDE FRAME RAIL FROM THE PIGTAIL CONNECTOR ON THE FACTORY BUMPER (**FIG 3**).





FIGURE 3

STEP 4:

REMOVE EIGHT (8) FACTORY BUMPER NUTS. REMOVE BUMPER FROM THE VEHICLE (**FIG 4**).

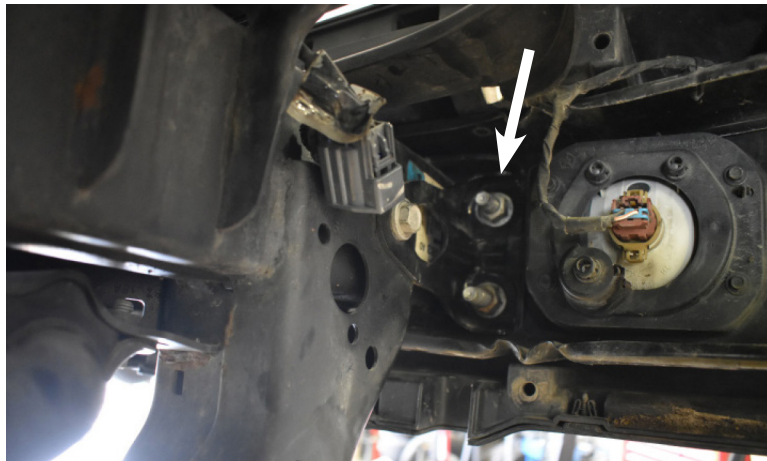


FIGURE 4

STEP 5:

OPTIONAL: REMOVE TWO BOLTS THAT MOUNT CROSSMEMBER TO EACH FRAME RAIL AND REMOVE CROSSMEMBER PLATE, LOCATED BELOW THE FRONT BUMPER (**FIG 5**).



FIGURE 5



STEP 6:

REMOVE THE TWO FACTORY BUMPER BRACKETS, ONE ON EACH FRAME HORN (**FIG 6**). THESE WILL NOT BE USED TO INSTALL THE NEW CRAWLTEK BLAZE FRONT BUMPER.



FIGURE 6

INSTALLATION - BLAZE FRONT BUMPER

STEP 7:

PLACE BLAZE FRONT BUMPER ONTO A TABLE. INSTALL 7/16" BOLTS INTO BUMPER FRONT-TO-REAR AND RETAIN WITH 7/16" PUSH NUT RETAINERS, USING A SOCKET TO HELP POSITION THE PUSH NUT (**FIG 7**). THE PUSH NUT RETAINERS WILL KEEP BOLTS IN PLACE WHILE INSTALLING THE FRONT BUMPER (**FIG 8**)



FIGURE 7



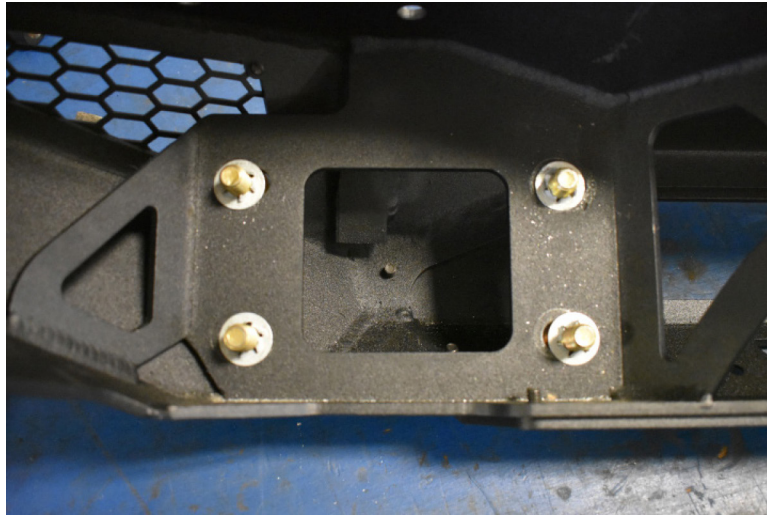


FIGURE 8

STEP 8:

PLACE BUMPER ONTO FRAME RAILS AND ALIGN EIGHT (8) 7/16" BOLTS WITH THE OE FRAME HORN BRACKET HOLES (**FIG. 9**). FASTEN ALL 7/16" BOLTS WITH SERRATED FLANGE NUTS AND TORQUE HARDWARE TO 68 FT-LBS.

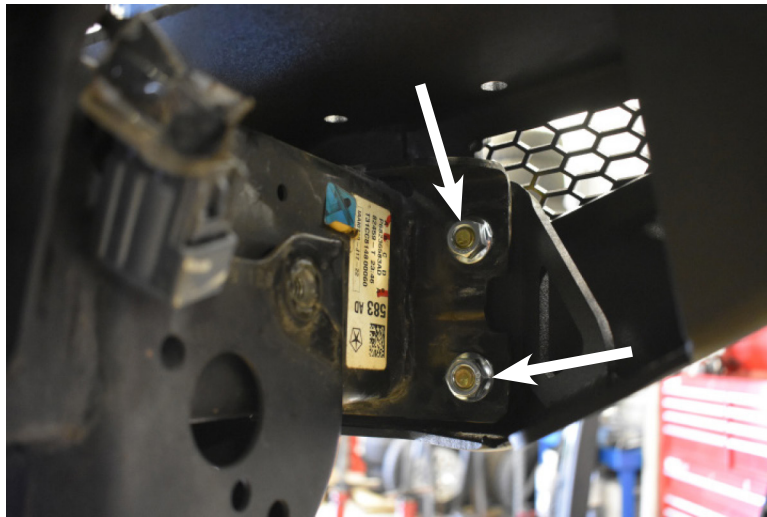


FIGURE 9

STEP 9:

USING FOUR (4) OF THE SUPPLIED 10-24 HARDWARE (C0022 BOLT PACK), INSTALL THE PASSENGER SIDE BUMPER VENT (**FIG 10**). TIGHTEN HARDWARE. REPEAT FOR DRIVER SIDE VENT.





FIGURE 10

STEP 10:

INSTALL CRAWLTEK STAINLESS STEEL BADGE USING PROVIDED SS RIVETS FROM BOLT PACK C0041 (**FIG 11**).



FIGURE 11

STEP 11:

NOTE: INSTALLING THE LIGHT BAR IS REQUIRED BEFORE MOUNTING THE CENTER FACE LIGHT PLATE TO THE MAIN SHELL. REFER TO "LIGHT BAR INSTALLATION" AT THE END OF THIS INSTRUCTION SET FOR INSTALLING BAJA DESIGNS 20" ONX6 AND 20" S8 LIGHT BARS. ONCE COMPLETE, RETURN AND CONTINUE ON TO STEP 12.



STEP 12:

USE THE TWO (2) 3/4" LENGTH FLAT SOCKET CAP SCREWS BOTTOM CENTER AND FASTEN WITH THE TWO (2) PROVIDED SERRATED FLANGE NUTS (**FIG 12**). TORQUE 3/4" LENGTH HARDWARE TO 11 FT-LBS.

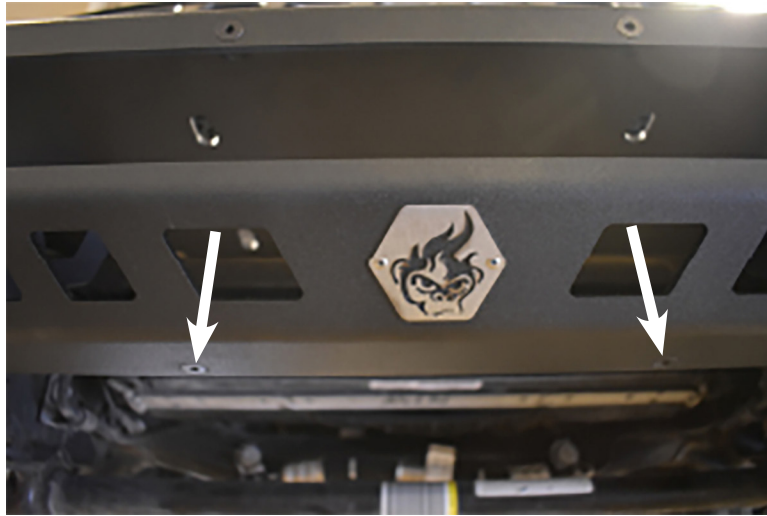


FIGURE 12

FAIRLEAD MOUNT AND WINCH INSTALLATION

STEP 1:

FIND THE 4 HOLES LOCATED ON THE TOP OF THE BUMPER AND ALIGN WINCH BRACKET HOLES (**FIG. 13**)

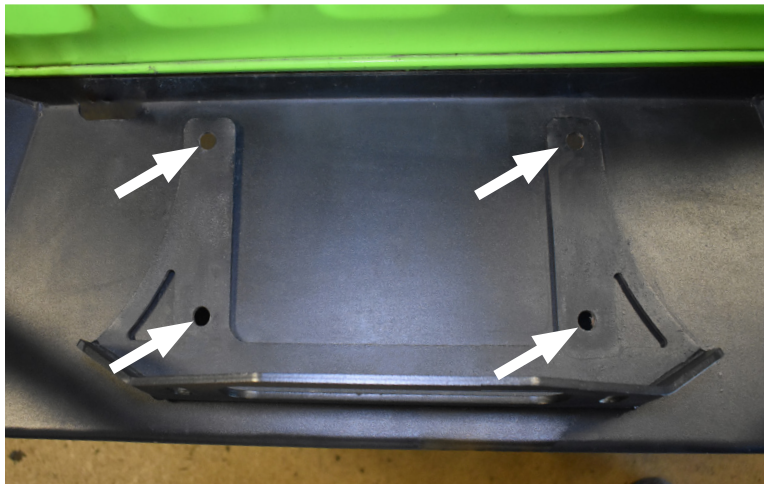


FIGURE 13



STEP 2:

PLACE WINCH ONTO WINCH BRACKET (HOLES ALIGNED) AND FASTEN WINCH ACCORDING TO WINCH MANUFACTURER INSTRUCTIONS. (FIG. 14)



FIGURE 14

STEP 3:

OPTIONAL: INSTALL HAWSE FAIRLEAD TO FORWARD FACE OF THE WINCH BRACKET (FIG. 15). (HAWSE NOT INCLUDED, CRAWLTEK ALUMINUM HAWSE FAIRLEAD RECOMMENDED PART # CWLCT10100)

NOTE: ALUMINUM FAIRLEAD IS INTENDED TO BE USED WITH SYNTHETIC WINCH LINE ONLY. DO NOT USE WITH STEEL CABLE, STEEL CABLE WILL DESTROY THE ALUMINUM SURFACE.



FIGURE 15



STEP 4:

WIRE WINCH PER WINCH MANUFACTURER INSTRUCTIONS.

STEP 5:

INSTALL WINCH SHACKLE (NOT INCLUDED) TO THE END OF YOUR WINCH CABLE PER MANUFACTURER SHACKLE MOUNT INSTRUCTIONS. **(FIG. 16)**

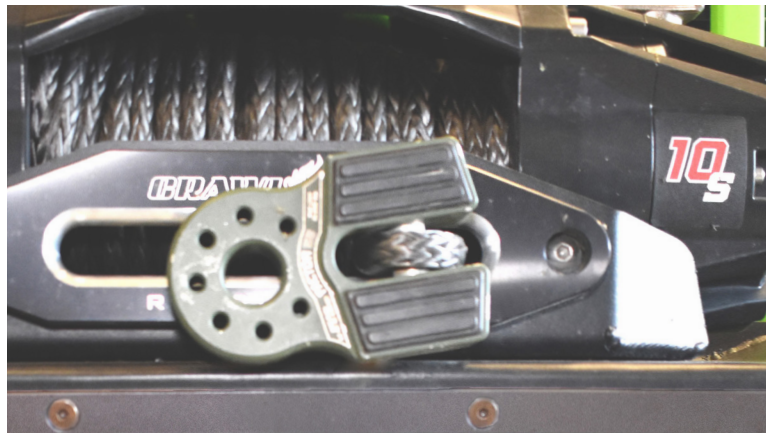


FIGURE 16

LIGHT BAR INSTALLATION

STEP 1:

INSTALL BRACKET TO LIGHT BAR ENDS USING THE STANDARD HEX BOLTS PROVIDED WITH YOUR BAJA DESIGN LIGHT BAR **(FIG. 17, 18)**. SHOWN IS THE BAJA DESIGN ONX6 20" LIGHT BAR. (BAJA DESIGN S8 20" LIGHT BAR WILL MOUNT IN THE FORWARD MOST HOLE BRINGING THE LIGHT BAR CLOSER TO THE INSERT OPENING.)

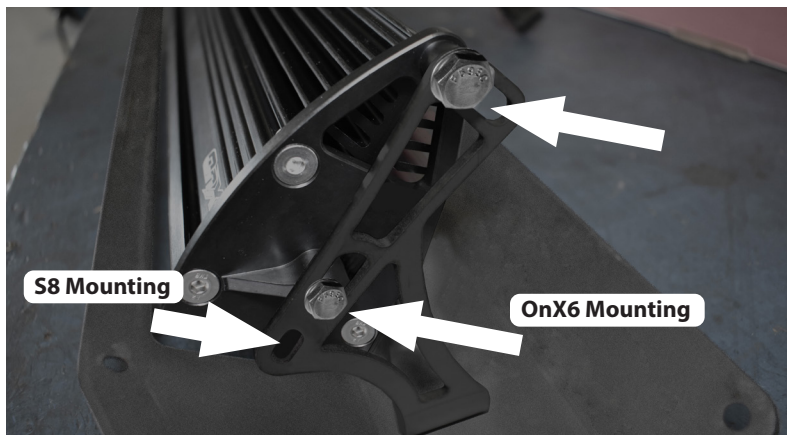


FIGURE 17



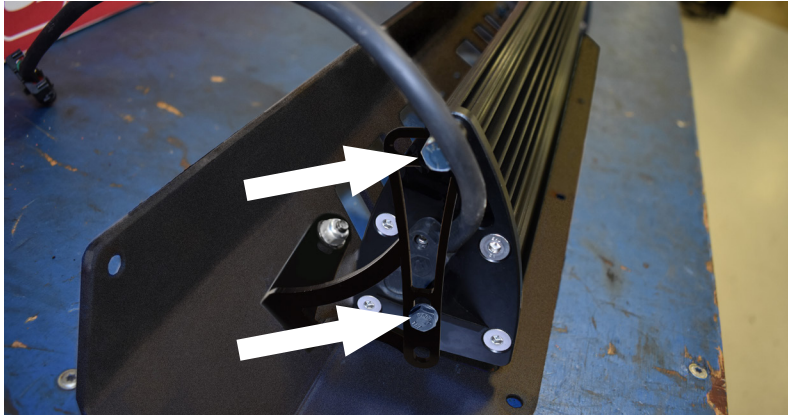


FIGURE 18

STEP 2:

MOUNT LIGHTBAR TO BUMPER INSERT USING TWO PROVIDED 5/8" LENGTH FLAT HEAD SOCKET CAP SCREWS AND TWO 1/4"-20 SERRATED NUTS. (FIG. 19)



FIGURE 19

STEP 3:

FEED LIGHT BAR WIRING THROUGH SUPPORT IN BUMPER. (FIG. 20)

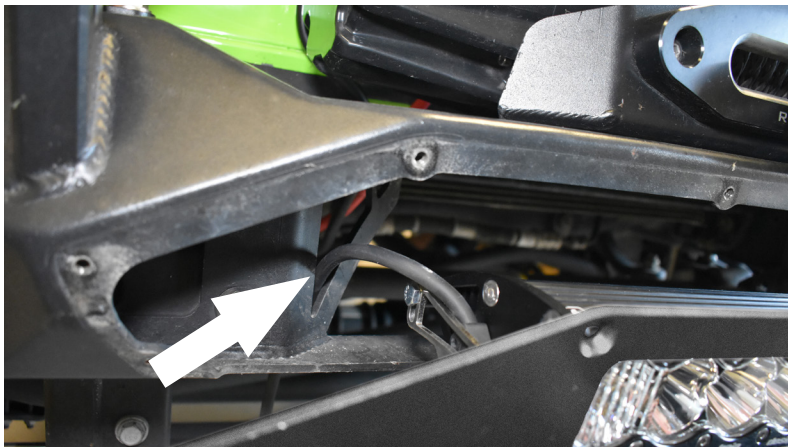


FIGURE 20



STEP 4:

TAP/CLEAN HOLES IN 06001 (MAIN SHELL) WHERE THE CENTER SECTION FASTENS USING A 1/4"-20 TAP. INSTALL BUMPER CENTER SECTION (06004) USING 10 (TEN) 3/4" LENGTH FLAT HEAD HEX DRIVE BOLTS (**FIG. 21**). REFER TO THE BAJA DESIGNS INSTRUCTIONS FOR CORRECT WIRING PROCEDURE. ONCE WIRED, RETURN TO STEP 12 IN "INSTALLATION - BLAZE FRONT BUMPER TO CONTINUE BUMPER INSTALLATION STEPS.

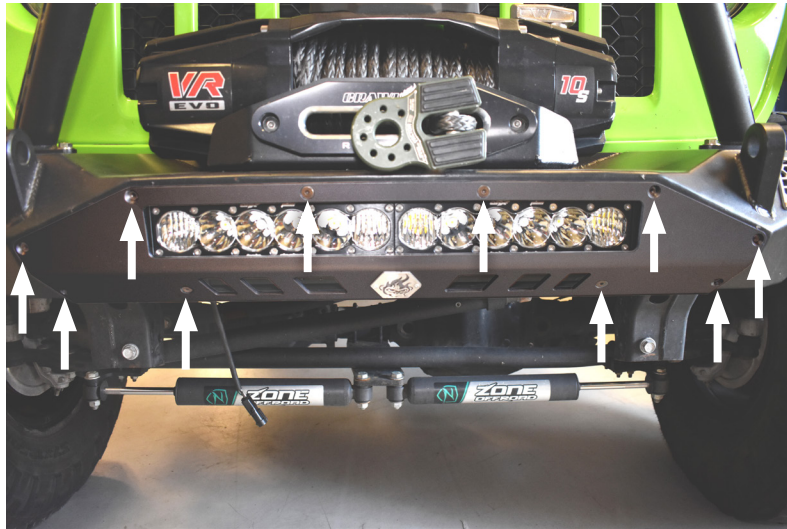


FIGURE 21

STEP 5:

TIGHTEN ALL HARDWARE. RECHECK HARDWARE AFTER 500 MILES AND AT REGULAR SERVICE INTERVALS.



YOU'RE NOT DONE YET!

Thank you for your new CrawlTek Revolution purchase! Follow us on Facebook for up to date coverage of new product releases. We love feedback, if you have any questions about the installation or parts were missing please contact us at sales-crawltek@ridefox.com or call us at 517.278.1039.

Be sure to show off your Jeep to the rest of the CrawlTek Revolution online. Find us on Facebook and Instagram to keep up on new products, upcoming events and more action. Tag us @crawltek for a chance to get featured

