

# **CRAWL**TEK R E V O L U T I O N

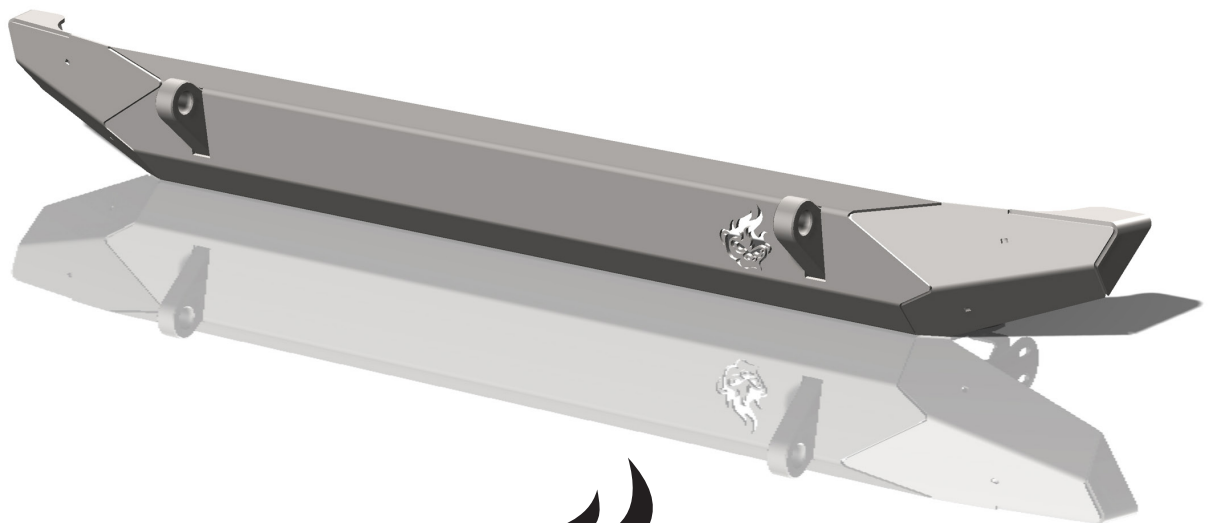
491 W. GARFIELD AVE., COLDWATER, MI 49036 • 517.278.1039  
CRAWLTEKREVOLUTION.COM • E-MAIL: SALES-CRAWLTEK@RIDEFOX.COM

## INSTALLATION INSTRUCTIONS

### INFERNO REAR BUMPER

**JK21001**

FOR USE WITH ALL  
JK AND JKU MODELS FROM 2007-2018



CrawlTek YouTube

**PLEASE READ THROUGH INSTRUCTIONS BEFORE INSTALLING**

2023-01-31

## WHAT'S IN THE BOX?

PLEASE VERIFY KIT CONTENTS BEFORE BEGINNING INSTALLATION

PART #	Qty	DESCRIPTION
06052	1	BUMPER - JK REAR - INFERNO
06053	1	JK INFERNO REAR BUMPER NUTSTRIP - DRIVER - YELLOW ZINC
06054	1	JK INFERNO REAR BUMPER NUTSTRIP - PASSENGER - YELLOW ZINC
342701	1	THREAD LOCKER
CWLU30010	1	DECAL: CRAWLTEK GEARSHIFT 3.5" X 3.5"
CWLU30020	1	DECAL: CRAWLTEK EYES 6" X 2"
CWLU30030	1	DECAL: CRAWLTEK JAX 3.75" X 2.8"
	2	7/16"-20 X 1-1/2" GRADE 8 YELLOW ZINC HEX CAP SCREW
	2	7/16" X 0.922" YELLOW ZINC STEEL SAE FLAT WASHER
	2	M10-1.5 X 30MM 10.9 YELLOW ZINC FINISH HEX CAP SCREW
	2	M10 X 20MM YELLOW ZINC TYPE A GENERAL PURPOSE FLAT WASHER
	2	#11631 M10-1.5 / 1MM - 6MM / 19MM EXTRUDED J-CLIP

## TOOLS REQUIRED

SAFETY GLASSES

RECIPROCATING SAW OR CUT OFF WHEEL

RIGHT ANGLE GRINDER / FLAP DISK (OPTIONAL)

22MM SOCKET OR WRENCH

18MM SOCKET OR WRENCH

11/16" SOCKET OR WRENCH

5/8" SOCKET OR WRENCH

9/16 WRENCH



## FACTORY REAR BUMPER REMOVAL

### STEP 1:

REMOVE (2) 16MM BOLTS ON BOTH SIDES OF THE FRAME RAILS AND KEEP. FIG. 1



### STEP 2:

REMOVE (2) 16MM BOLTS FROM BEHIND THE CROSS MEMBER. FIG. 2



### STEP 3:

PULL FACTORY REAR BUMPER OFF VEHICLE.



**STEP 4:**

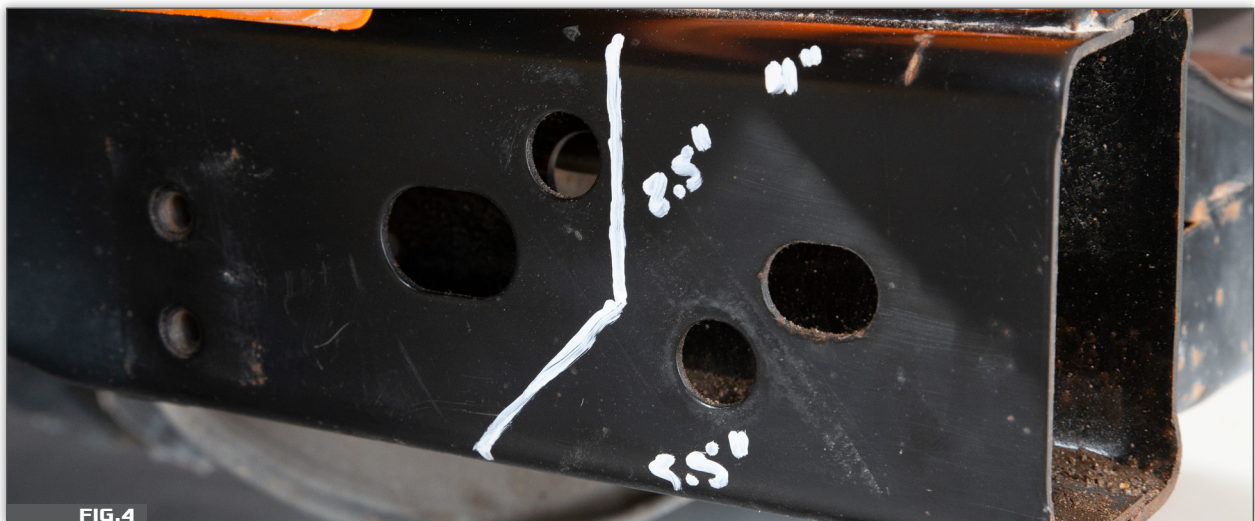
REMOVE (3) 18MM BOLTS HOLDING THE FACTORY TOW HOOK ON (IF EQUIPPED) FIG. 3



## INSTALLATION OF THE JEEP PYRO REAR BUMPER

**STEP 5:**

MEASURE 4" FROM END OF FRAME JUST BEHIND BODY MOUNTS ON TOP, MEASURE 2.5" DOWN FROM TOP MARK, MEASURE 5.5" BACK ON BOTTOM CONNECT MARKS DIAGONALLY. FIG. 4



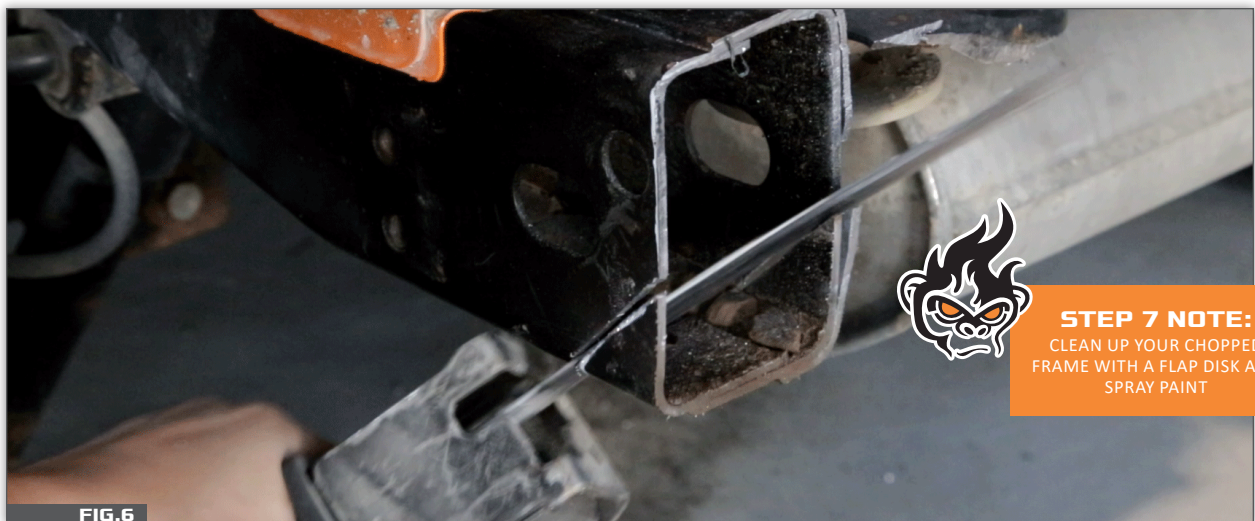
**STEP 6:**

STARTING BEHIND THE BODY MOUNT BRACKET AND CROSS MEMBER CUT ACROSS AND STRAIGHT DOWN THE FRAME RAIL, BE CAREFUL AS YOU COMPLETE YOUR LAST CUT AS THE CROSSMEMBER SHOULD FALL FREE OF THE JEEP. FIG. 5



**STEP 7:**

REMOVE FRAME RAIL BOTTOM CORNER ON BOTH ENDS, CUTTING PERPENDICULARLY. FIG. 6



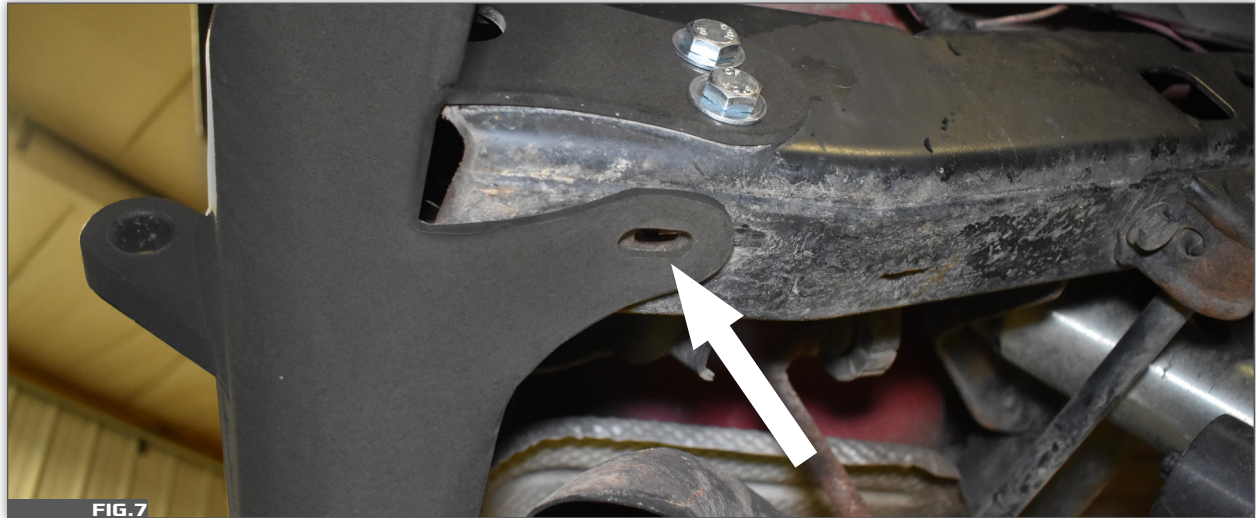
**STEP 8:**

REMOVE REAR BODY MOUNT BOLTS AND KEEP TO BE RE-INSTALLED.



**STEP 9:**

DO A PARTIAL INSTALL OF THE BUMPER BY PUTTING IT IN PLACE ON THE VEHICLE AND INSTALLING THE 2 FACTORY M10 BOLTS ON BOTH SIDES (4 BOLTS TOTAL) ADJUST THE POSITION OF THE BUMPER SO THESE BOLTS ARE IN THE MIDDLE OF THE SLOTS TO MAINTAIN FULL RANGE OF ADJUSTMENT. ONCE BUMPER IS IN PLACE SO BOTTOM MOUNTS SIT FLAT ON THE FRAME, MARK THE CENTER OF THE SLOTTED HOLE ONTO THE FRAME FOR DRILLING. FIG. 7

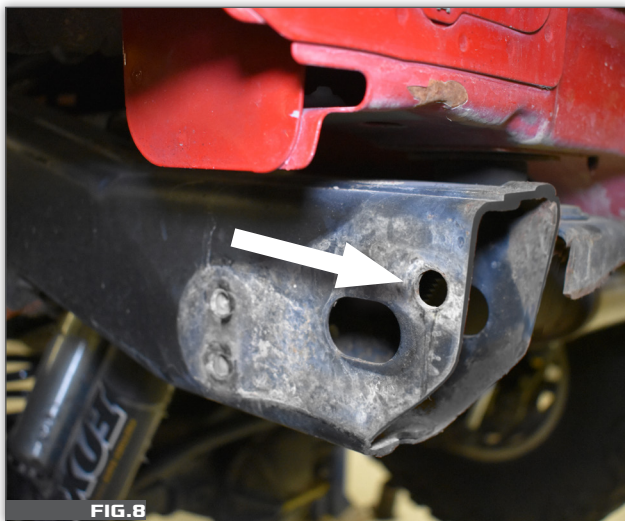


**STEP 10:**

REMOVE BUMPER, DRILL 1/2" HOLES IN THE CENTER OF THE MARK FROM THE PREVIOUS STEP AND TOUCH UP RAW STEEL SHOWING WITH PAINT TO PREVENT CORROSION.

**STEP 11:**

INSTALL PROVIDED J-CLIP FROM BOLT PACK C0010 ONTO THE REAR MOST HOLE ON THE OUTSIDE OF THE FRAME AS SHOWN IN FIGURE BELOW. FIG. 8, 9



**STEP 12**

TRIM ABOUT 1/4" OFF ONE SIDE OF THE BODY MOUNT BOLT WASHER FOR CLEARANCE WHEN INSTALLING INTO BUMPER. FIG. 10



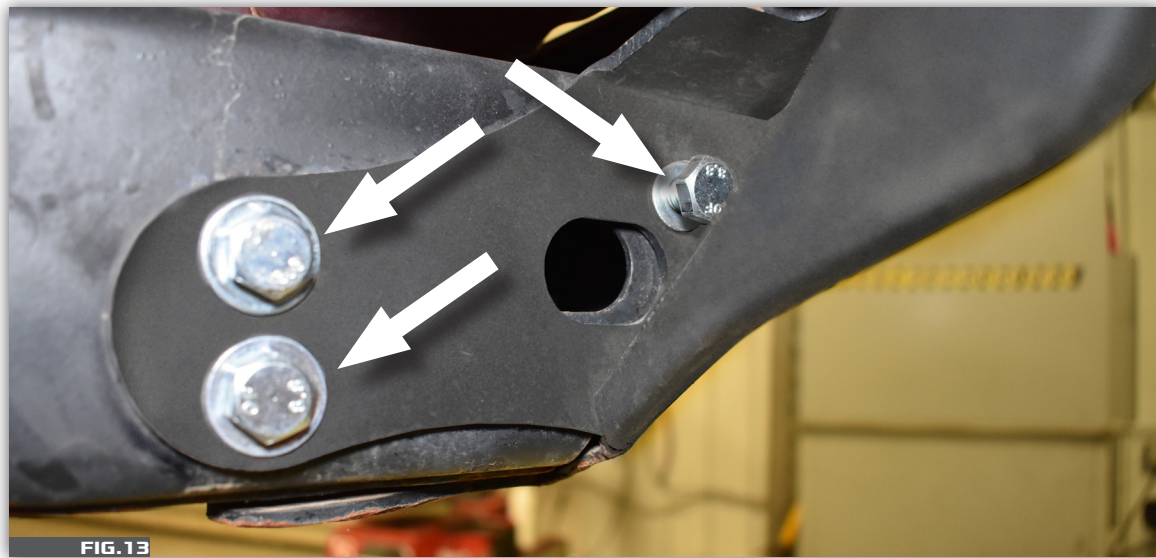
**STEP 13**

INSTALL BOTH BODY MOUNT BOLTS ONTO BUMPER AND APPLY THREAD LOCKER, THEN WITH THE HELP OF AN ASSISTANT INSTALL THE BUMPER FROM BELOW WHILE ALIGNING THE BODY MOUNT BOLTS IN THEIR RESPECTIVE BODY MOUNTS, START THE THREADS BUT DO NOT TIGHTEN. FIG. 11, 12



#### STEP 14

ONCE THE BODY MOUNT BOLTS ARE STARTED AND BUMPER IS CLOSE TO POSITION INSTALL THE 2 FACTORY M10 BOLTS ON EITHER SIDE AND START THE PROVIDED M10 BOLT INTO THE J-CLIP INSTALLED PREVIOUSLY. FIG. 13



#### STEP 15

ONCE ALL SIDE BOLTS ARE STARTED, FEED THE PROVIDED NUT STRIP (06053-06054) THROUGH THE SLOTTED HOLE IN THE FRAME TO THEN LINE UP WITH THE HOLE YOU DRILLED IN THE BOTTOM OF THE FRAME AND INSTALL THE PROVIDED 7/16 - 20 X 1.5" BOLTS. FIG. 14,15

**STEP NOTE:** THE NUT TAB WILL LIKELY HAVE TO BEGIN UPSIDE DOWN WHEN FEEDING IT INTO THE FRAME SLOTTED HOLE.



#### STEP 15 NOTE:

THE NUT TAB WILL LIKELY HAVE TO BEGIN UPSIDE DOWN WHEN FEEDING IT INTO THE FRAME SLOTTED HOLE.





## STEP 16

ONCE ALL HARDWARE IS INSTALLED ALIGN BUMPER AND TIGHTEN ALL HARDWARE.

TIGHTEN BODY MOUNT BOLTS TO 80 FT/LBS

TIGHTEN M10 BOLTS TO 25 FT/LBS

TIGHTEN 7/16 BOLTS TO 35 FT/LBS.



## YOU'RE NOT DONE YET!

*Thank you for your new CrawlTek Revolution purchase! Follow us on facebook for up to date coverage of new product releases. We love feedback, if you have any questions about the installation or parts were missing please contact us at [sales-crawltek@ridefox.com](mailto:sales-crawltek@ridefox.com) or call us at 517.278.1039.*

*Be sure to show off your jeep to the rest of the CrawlTek Revolution online. Find us on facebook and instagram to keep up on new products, upcoming events and more action. Tag us @crawltek for a chance to get featured*

