

CRAWLTEK R E V O L U T I O N

491 W. GARFIELD AVE., COLDWATER, MI 49036 • 517.278.1039
CRAWLTEKREVOLUTION.COM • E-MAIL: SALES-CRAWLTEK@RIDEFOX.COM

INSTALLATION INSTRUCTIONS

INFERNO FRONT BUMPER

JK11021

FOR USE WITH ALL
JK AND JKU MODELS FROM 2007-2018



CrawlTek YouTube

PLEASE READ THROUGH INSTRUCTIONS BEFORE INSTALLING

2023-12-05

WHAT'S IN THE BOX?

PLEASE VERIFY KIT CONTENTS BEFORE BEGINNING INSTALLATION

PART #	Qty	DESCRIPTION
06140	1	BUMPER - JK FRONT - INFERNO
06036	1	JK INFERNO FRONT BUMPER VACUUM PUMP RELOCATION
06176	1	CRAWLTEK SS LOGO 2"
C0041	1	BOLT PACK - LOGO RIVETS
CWLU30010	1	DECAL: CRAWLTEK GEARSHIFT 3.5" X 3.5"
CWLU30020	1	DECAL: CRAWLTEK EYES 6" X 2"
CWLU30030	1	DECAL: CRAWLTEK JAX 3.75" X 2.8"
C0006	1	BOLT PACK
	4	1/2"-13 X 5-1/2" GRADE 8 YELLOW ZINC FINISH HEX CAP SCREW
	4	1/2"-13 GRADE F ZINC FINISH STEEL FLANGE TOP LOCK NUT
	4	1/2" X 1.062" YELLOW ZINC FINISH STEEL SAE FLAT WASHER

TOOLS REQUIRED

SAFETY GLASSES

18MM SOCKET OR WRENCH

10MM WRENCH OR SOCKET

11/16" SOCKET OR WRENCH

5/8" SOCKET OR WRENCH

9/16" WRENCH

7/16" SOCKET

3/16" ALLEN HEAD SOCKET

FLAT HEAD SCREWDRIVER

SMALL HAMMER

ANGLE GRINDER WITH FLAP DISC

RECIPROCATING SAW WITH METAL CUTTING BLADES

PRE-INSTALLATION NOTES

1. 2012 OR NEWER MODELS WILL NEED TO RELOCATE THE VACUUM PUMP WITH THE INCLUDED BRACKET.
2. JK RUBICON MODELS EQUIPPED WITH ELECTRONIC SWAY BAR ACTUATOR REQUIRE THE WINCH TRAY TO BE TRIMMED. REFER TO INSTRUCTION STEPS AND THE PROVIDED TRIM TEMPLATE.
3. THIS PRODUCT REQUIRES CUTTING TO YOUR FRAME.



FACTORY FRONT BUMPER REMOVAL

STEP 1:

REMOVE 2 CLIPS HOLDING TRIM PIECE ON. (FIG. 1)

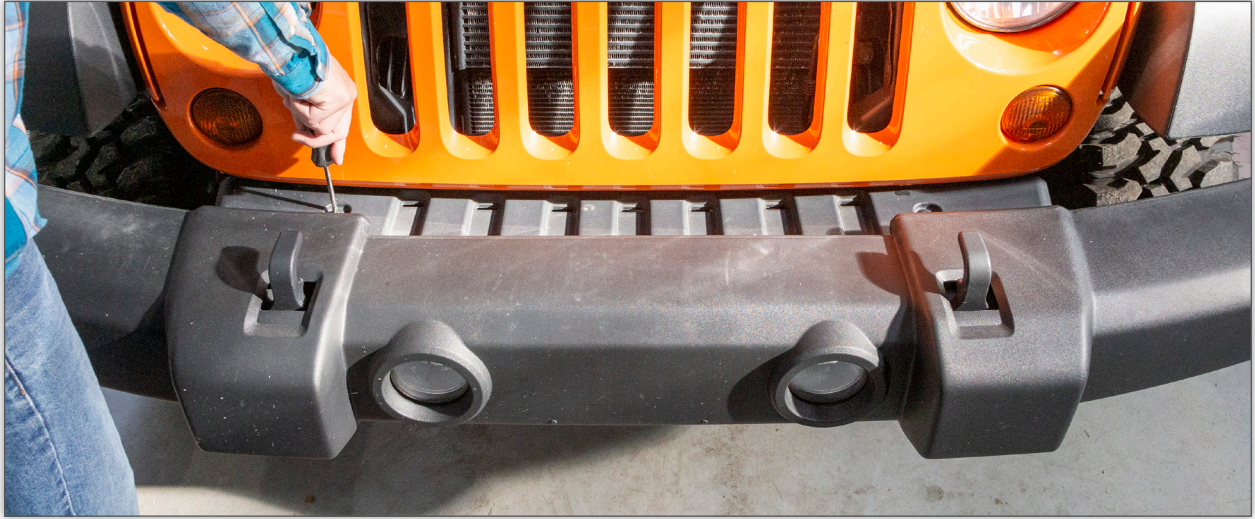


FIGURE 1

STEP 2:

REMOVE LOWER BUMPER VALANCE. (FIG. 2)



FIGURE 2



STEP 3:

REMOVE FACTORY (8) BUMPER BOLTS. **(FIG. 3)**

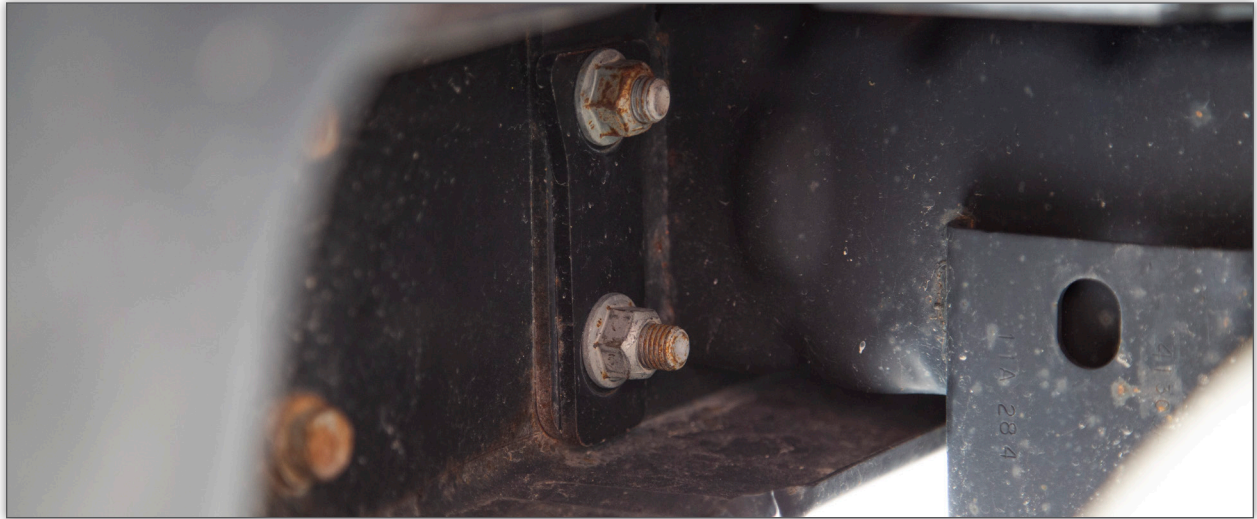


FIGURE 3

STEP 4:

REMOVE FACTORY BUMPER FROM FRAME HORNS.

STEP 5:

DISCONNECT FACTORY FOG LIGHTS. **(FIG. 4)**



FIGURE 4



INSTALLATION OF THE INFERNO FRONT BUMPER

STEP 1:

MEASURE 2" BEHIND FRAME HORN AND USING YOUR RECIPROCATING SAW CUT STRAIGHT DOWN. (FIG. 5, 6)



FIGURE 5



FIGURE 6



STEP 2:

REMOVE CRASH BAR BY CUTTING DOWN BOTH SIDES OF THE FRAME RAILS AND ALONG THE BOTTOM FRAME RAIL WITH THE RECIPROCATING SAW. (FIG. 7, 8)



FIGURE 7

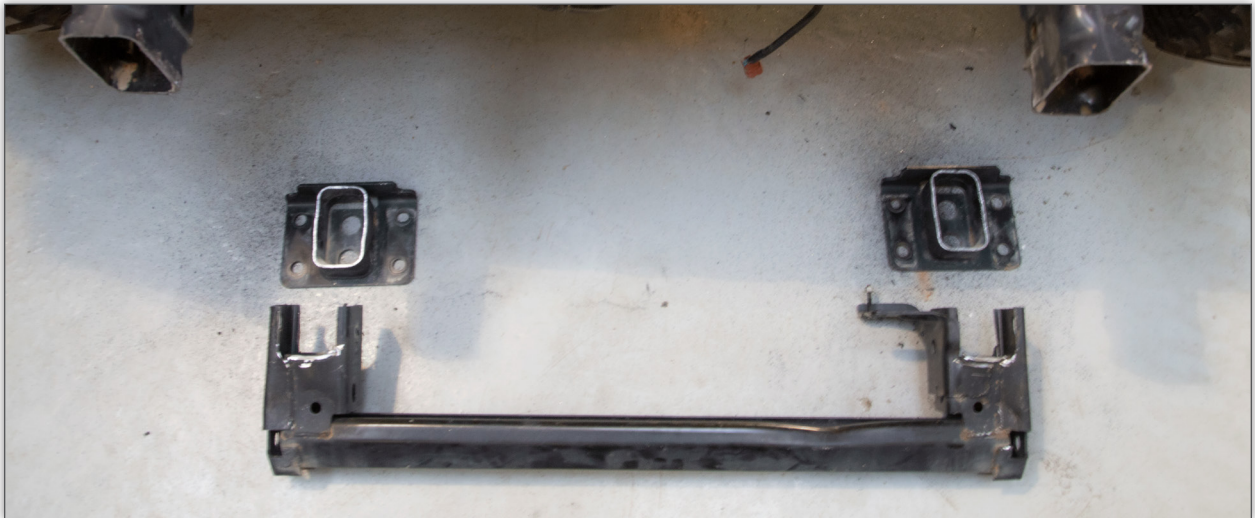


FIGURE 8

STEP 3:

USING AN ANGLE GRINDER WITH FLAP DISC CLEAN UP THE FRAME RAILS SO THEY ARE SMOOTH AND PAINT.

STEP 4:

DRILL OUT TOP BACK HOLES TO 9/16"





YOU'RE NOT DONE YET!

Thank you for your new CrawlTek Revolution purchase! Follow us on facebook for up to date coverage of new product releases. We love feedback, if you have any questions about the installation or parts were missing please contact us at sales-crawltek@ridefox.com or call us at 517.278.1039.

Be sure to show off your jeep to the rest of the CrawlTek Revolution online. Find us on facebook and instagram to keep up on new products, upcoming events and more action. Tag us @crawltek for a chance to get featured



JK11001/JK11011/JK11021/JK11031

2007-18 Jeep JK Sway Bar Motor Relief Template

NOTES

If printing this instruction set, ensure 'Actual Size' is selected from the Page Sizing & Handling section. Use the two reference measurements shown to measure actual printed template lengths (on the 1:1 template on next page). If measurements are not the same, adjust print scale and reprint.

INSTRUCTIONS

- 1.) Cut out template: remove outside material and material within slots.
- 2.) Align two slots and three edges shown on same bumper shell profiles.
- 3.) Trace path between the two arrows onto the bumper shell to create the relief outline.
 - TIP: Use two pieces of painter's tape to hold the template in place while tracing.
- 4.) Wear proper personal protective equipment. Cut traced line with appropriate cutoff wheel or reciprocating buzz saw. Lightly clean up and deburr sharp edges with a sanding disc.
- 5.) Coat bare metal surfaces with paint.

