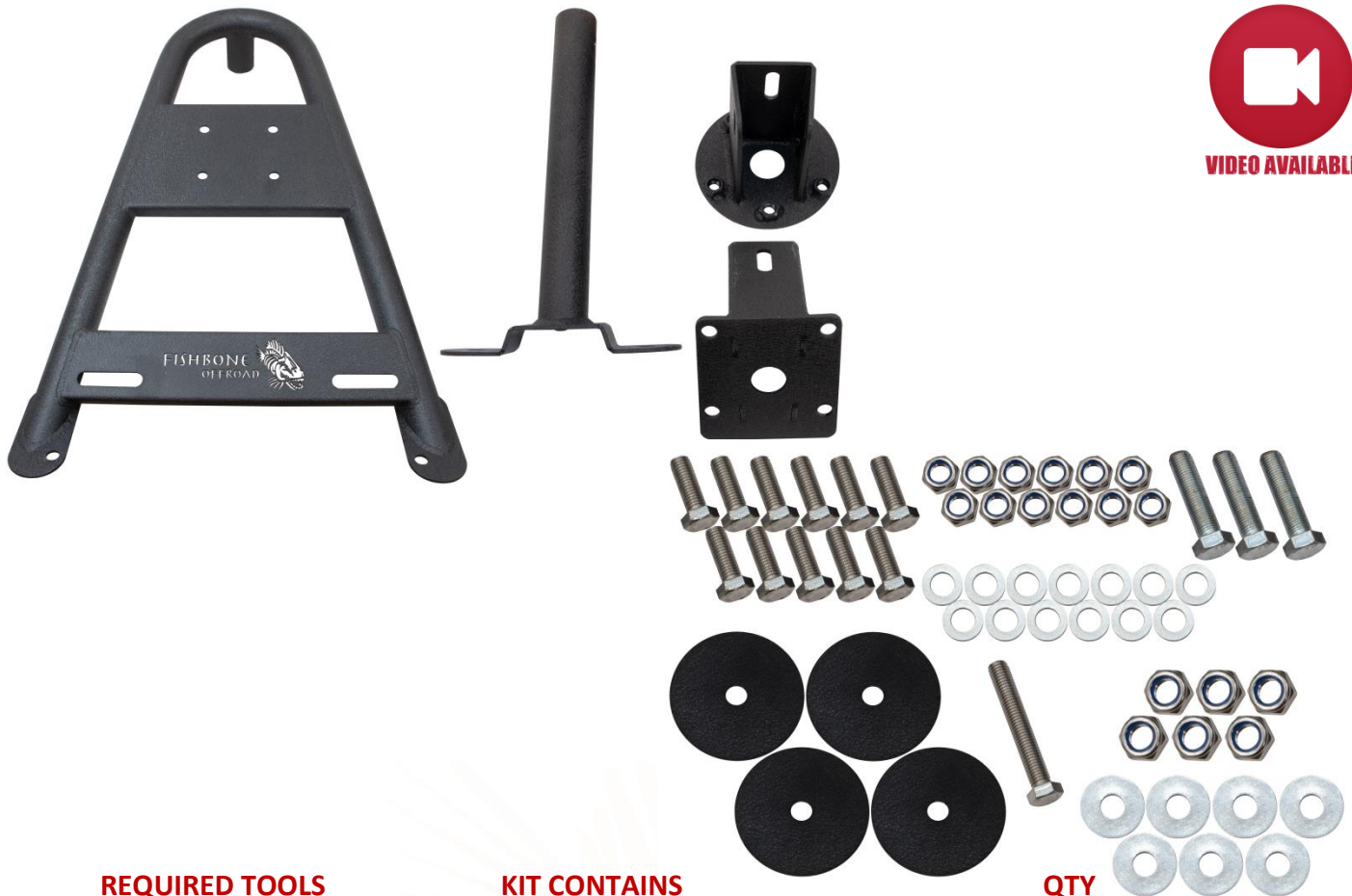


INSTALLATION INSTRUCTIONS

PART No.

FB21213

**Jeep® JT Gladiator
Gladiator In-Bed Tire Carrier**



REQUIRED TOOLS

19MM Socket
19MM Wrench
21MM Socket
Drill
.5" Drill Bit
Drill Stop
Paint
Thread Locker
Marker
Help of a Friend

KIT CONTAINS

Carrier Frame
Support Pipe
Upper Hub Mount
Lower Hub Mount
M14 Hex Bolt
M12 Hex Bolt
M12x35mm Hex Bolt
Bed Washer
M12 Washer
M12 Oversized Washer
M12 Nyloc Nut
M14 Nyloc Nut
Lug Nuts

QTY

1
1
1
1
3
1
11
4
13
7
12
6
3

Jeep® JT Gladiator Gladiator In-Bed Tire Carrier

1) ASSEMBLE

With the upper hub mount, confirm which holes line up with your tire's lugs.



With the 3 M14 bolts and a 21mm wrench, screw them into the upper mount with thread locker so that they match your lug's pattern.



Begin loosely assembling the hub mount. With three of the M12 bolts, 3 washers, 3 oversized washers, 3 Nyloc nuts, and 2 19mm sockets or wrenches, assemble the hub loose enough so that you are able to pull and push the part to the correct mount size.



Hold the mount up to your tire and adjust its length so that the mounting plate is flush or near flush with the tire, ensuring that it will lie properly on the mount.



Completely tighten down the 3 hex bolts.

With the support pipe and frame, slide the pipe into the frame and line up the holes as shown.

Using the single large bolt, 2 M12 washers, a Nyloc nut, and 2 19mm sockets, secure the two parts together.

INSTALLATION INSTRUCTIONS

PART No.

FB21213

Jeep® JT Gladiator Gladiator In-Bed Tire Carrier



With the hub mount and frame, secure the two with 4 M12 bolts, 4 M12 washers, 4 oversized washers, 4 Nyloc nuts, and 2 19mm sockets.



2) **PLAN THE INSTALLATION**

Place the carrier into the bed of your vehicle.

Take note and special care to ensure that during the installation process, damage to vital components won't occur below the bed, and that the locations underneath have enough clearance for the 4 bed washers.

Place your tire onto the mount and ensure it will rest without any complications.

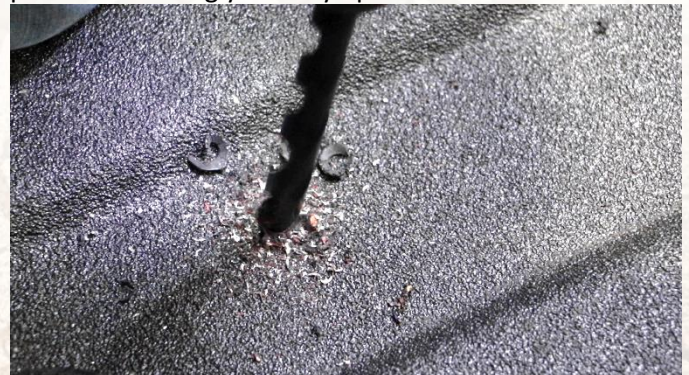
With a marker, mark the bolt holes to help identify the drill locations.



Again, ensure that drilling below these points won't damage vital components

3) **DRILL**

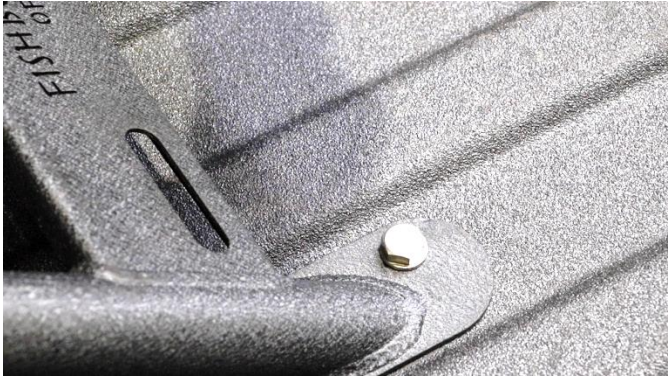
Begin drilling the bed with a drill stop starting with a pilot and working your way up to a .5in bit.



Jeep® JT Gladiator Gladiator In-Bed Tire Carrier

4) **INSTALL**

Begin securing the carrier to the bed using the remaining M12 bolts, washers, bed washers, and Nyloc nuts.



With the help of a friend, tighten down and secure the carrier with 2 19mm sockets.



Place your tire onto the carrier and secure it with its lug nuts, or the 3 we've provided.



ENJOY YOUR NEW FISHBONE OFFROAD JT TIRE CARRIER!

