

CRAWLTEK R E V O L U T I O N

491 W. GARFIELD AVE., COLDWATER, MI 49036 • 517.278.1039
CRAWLTEKREVOLUTION.COM • E-MAIL: SALES-CRAWLTEK@RIDEFOX.COM

INSTALLATION INSTRUCTIONS

Blaze Front Skid Plate

CWLFB19001

**FOR USE WITH
FORD BRONCO MODELS 2021-2022
EQUIPPED with CRAWLTEK BLAZE BUMPER**



CrawlTek YouTube

PLEASE READ THROUGH INSTRUCTIONS BEFORE INSTALLING

2023-03-01

WHAT'S IN THE BOX?

PLEASE VERIFY KIT CONTENTS BEFORE BEGINNING INSTALLATION

CWLFB19001		2020-22 FORD BRONCO BLAZE FRONT SKID PLATE
06250	1	BRONCO BLAZE LOWER SKID PLATE
06251	1	BRONCO BLAZE - SKID PLATE - MESH INSERT
06263	2	SPACER PLATES - NO WINCH MOUNT
06266	1	BRONCO INTERCOOLER SKID PLATE BRACKET - DRIVER'S SIDE
06267	1	BRONCO INTERCOOLER SKID PLATE BRACKET - PASSENGER'S SIDE
06268	1	BRONCO ALUMINUM SKID PLATE COVER
05191	2	LOWER INTERCOOLER MOUNT SPACER
C0049	1	BOLT PACK
	2	M10-1.50 X 40MM BOLT - CLASS 10.9 - CLEAR ZINC
	2	3/8" USS WASHER - CLEAR ZINC
	2	3/8"-16 X 1-1/4" BHSCS - STAINLESS STEEL - BLACK OXIDE COATED
	13	3/8"-16 X 3/4" FHSCS - STAINLESS STEEL - BLACK OXIDE COATED
	13	3/8"-16 SERRATED EDGE FLANGED NUT - CLEAR ZINC
	2	1/4"-20 X 3/4" FHSCS - 18-8 STAINLESS STEEL - BLACK OXIDE COATED
	10	1/4"-20 X 3/4" BHSCS - 18-8 STAINLESS STEEL - BLACK OXIDE COATED
	10	1/4"-20 SERRATED EDGE FLANGED NUT - CLEAR ZINC

RECOMMENDED TOOLS

1. IMPACT WRENCH
2. RATCHETING COMBINATION WRENCH
3. ALLEN WRENCHES

PRE-INSTALLATION NOTES

1. THE BLAZE SKID PLATE IS DESIGNED TO WORK ONLY WITH CRAWLTEK BLAZE BUMPERS.



SKID PLATE ASSEMBLY

STEP 1:

INSTALL CRAWLTEK SKID PLATE COVER USING 13 COUNTER SUNK FLAT HEAD ALLEN BOLTS AND FLANGE NUTS. (FIG. 1)



FIGURE 1

STEP 2:

INSTALL VENT PLATE USING 10 PROVIDED BUTTON HEAD ALLEN BOLTS AND FLANGE NUTS. (FIG. 2)



FIGURE 2



STEP 3:

REMOVE PASSENGER SIDE AND DRIVERS SIDE INTERCOOLER BRACKETS. RETAIN FACTORY HARDWARE. **(FIG. 3)**



FIGURE 3

STEP 4:

REMOVE INTERCOOLER RUBBER ISOLATORS ON BOTH SIDES. INSTALL SPACER ABOVE RUBBER ISOLATOR **(FIG. 4A)** BETWEEN INTERCOOLER AND ISOLATOR. **(FIG. 4B)**



FIGURE 4A



FIGURE 4B



STEP 5:

INSTALL SPACER BRACKET (**FIG. 5A**) BETWEEN FRAME AND PROVIDED INTERCOOLER BRACKET WITH ONLY THE REAR FACTORY BOLT. ALIGN HOLE THEN SNUG BOLT. (**FIG. 5B**)



FIGURE 5A

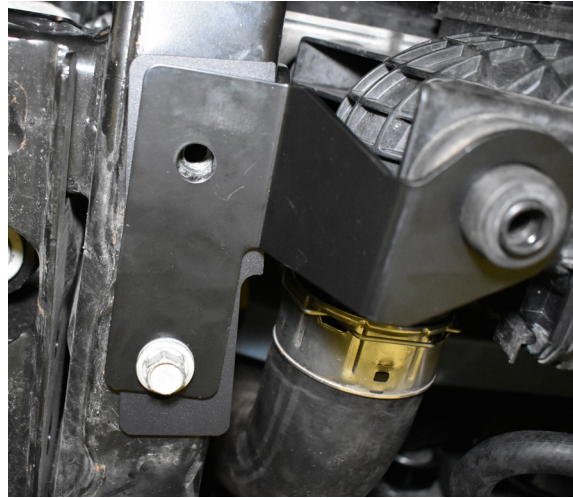


FIGURE 5B

STEP 6:

INSTALL SPACER AND PROVIDED INTERCOOLER BRACKET ON THE DRIVERS SIDE (**FIG. 6**) IN TH SAME MANNER AS THE PASSENGER SIDE. INSTALL ONLY THE REAR FACTORY BOLT. ALIGN FRONT HOLE AND SNUG BOLT.

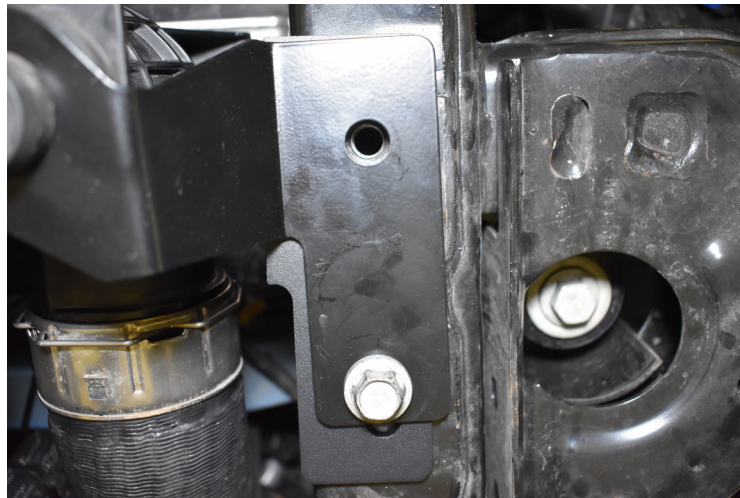


FIGURE 6



STEP 7:

INSTALL 2 PROVIDED REAR BOLTS AND WASHERS INTO FRAME LEAVING APPROXIMATELY 1/2 BOLT THREAD EXPOSED. **(FIG. 7A, FIG. 7B)** THIS IS WHERE THE SLOTTED SKID PLATE HOLES WILL MOUNT.

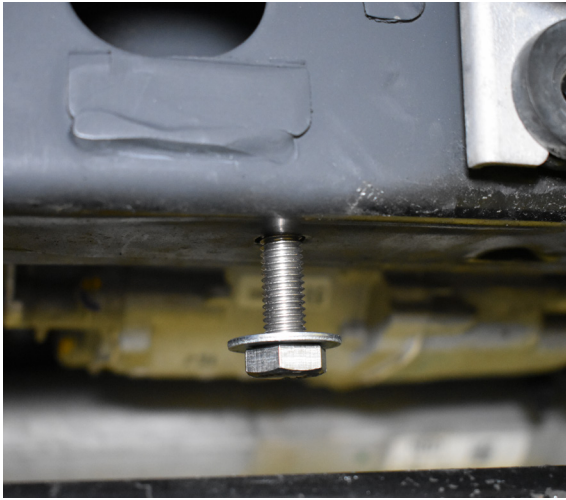


FIGURE 7A

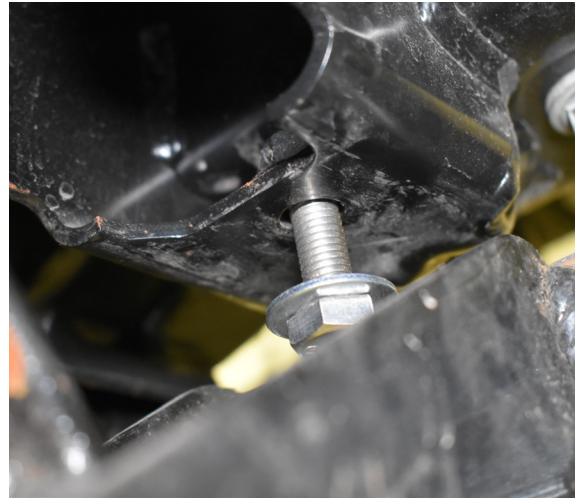


FIGURE 7B

STEP 8:

REMOVE THE THREE BUTTON HEAD BOLTS FROM THE BOTTOM OF YOUR CRAWLTEK BLAZE BUMPER. RETAIN HARDWARE FOR RE-USE. **(FIG.8)**



FIGURE 8



STEP 9:

INSTALL SKID PLATES SLOTTED HOLES INTO 2 REAR BOLTS (**FIG. 9A, FIG. 9B**), LIFTING FRONT OF SKID PLATE AND FASTENING FRONT OF SKID PLATE TO BUMPER. (**FIG.9C**)

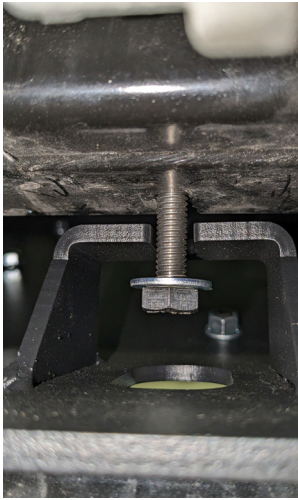


FIGURE 9A



FIGURE 9B



FIGURE 9C

STEP 10:

INSTALL FACTORY BOLTS INTO FRONT HOLES IN THE DRIVERS AND PASSENGER SIDE INNER COOLER BRACKETS. BOLTS SHOULD BE INSTALLED THROUGH SKID PLATE, INNER COOLER, SPACER PLATE, INTO FRAME NUT. (**FIG.10**)



FIGURE 10

STEP 11:

TIGHTEN ALL HARDWARE.





YOU'RE NOT DONE YET!

Thank you for your new CrawlTek Revolution purchase! Follow us on facebook for up to date coverage of new product releases. We love feedback, if you have any questions about the installation or parts were missing please contact us at sales-crawltek@ridefox.com or call us at 517.278.1039.

Be sure to show off your jeep to the rest of the CrawlTek Revolution online. Find us on facebook and instagram to keep up on new products, upcoming events and more action. Tag us @crawltek for a chance to get featured

