



INSTALLATION INSTRUCTIONS

Product: Front Shock Extension Brackets
Part Number: JKS9611

Applications: Wrangler JL, 2018-2021 (Front only)
Gladiator JT, 2020-2021 (Front only)

877-533-7557 • jks@sporttruckusainc.com • www.jksmfg.com
491 W. Garfield Avenue, Coldwater, MI 49036

Welcome

CONGRATULATIONS on purchasing a set of new Shock Extension Brackets from JKS Manufacturing. We are committed to providing you with the best products available and your satisfaction is our first priority.

PLEASE READ these Installation Instructions carefully, and save them for future reference, as they contain important installation and maintenance information.

Tools Required

- Metric/Standard Socket Wrench Set
- Torque Wrench

Parts

| | Description | QTY |
|----------|---|-----|
| A | Shock Extension Bracket- Driver's side | 1 |
| B | Shock Extension Bracket- Passenger's side | 1 |
| C | 3/8"-16 x 1-1/4" Bolt | 2 |
| D | 3/8"-16 Prevailing Torque Nut | 2 |
| E | 3/8" SAE Washer | 4 |
| F | 12mm-1.50 x 30mm Bolt | 2 |
| G | 12mm-1.50 x 80mm Bolt | 2 |
| H | 12mm Flat Washer | 8 |
| I | 12mm-1.50 Prevailing Torque Nut | 4 |
| J | 0.75" x .134" x 1.575" Sleeve | 2 |

Installation

1. PREPARATION

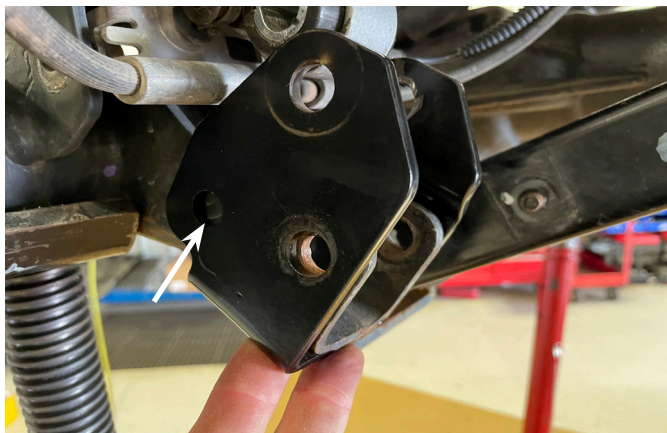
- Raise and support vehicle chassis with jack stands behind front lower control arm pockets.
- Support the front axle with a hydraulic jack and remove the front wheels and tires.
- Disconnect the front shocks from the axle, keep all hardware for reinstallation. Work on one side of the vehicle at a time.



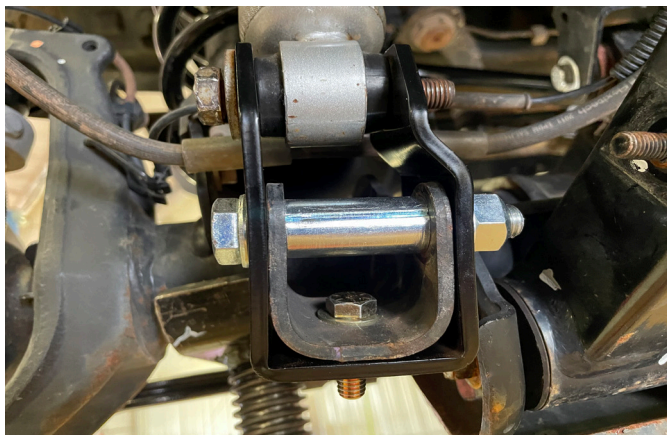
- Carefully lower the axle approximately 2 inches, making sure that no other components are binding or stretched.

2. INSTALLATION

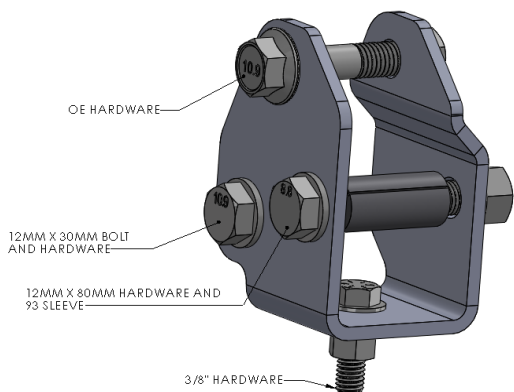
- The front shock extension brackets are side specific and stamped on the inside surface. 03568 is the driver's side bracket and 03569 is the passenger's side bracket.
- Slide the driver's side bracket on and mark the hole that needs to be drilled.



- Using a 1/2" drill bit, drill a hole in the marked location.
- Loosely install the bracket with the hardware included in bolt pack J159. Reference the figure below.



- Sleeve 93 will be used in the OE shock mounting position.



- Torque the 12mm hardware to 73 ft-lbs. Torque 3/8" hardware to 33 ft-lbs.
- Reinstall the shock into the shock extension bracket using the OE hardware. Torque to 74 ft-lbs.

□ 3. FINAL STEPS

- Reinstall the front wheels and tires, lower vehicle to ground.
- Torque lug nuts to 130 ft-lbs.
- Double check all hardware for proper torque.
- Check all fasteners after 500 miles and at regularly scheduled maintenance intervals.
-

©2015 JKS Manufacturing
Revision Date 11/29/2021